



# COMPANY PROFILE

DUA AL KHALEEJ CONTRACTING CO.





# WELCOME TO OUR COMPANY

Dua Al Khaleej Contracting Co., a leading entity in Saudi Arabia, specializes in a comprehensive range of top-quality steel fabrication, installation, and maintenance services. From galvanized steel products, emergency doors, and composite panels to wooden décor and elevator maintenance, our expert team ensures precision and excellence in every project. With an unwavering commitment to client satisfaction and unmatched craftsmanship, we deliver tailored solutions that exceed expectations across various sectors, setting the standard for reliability and innovation in the contracting industry.





---

# OUR CORE VALUES

At Dua Al Khaleej Contracting Co., our core values shape our essence. We prioritize excellence in quality and professionalism while upholding integrity through honesty and transparency. Placing clients first, we tailor solutions, embrace innovation, and foster teamwork to deliver exceptional services and build enduring relationships.



# OUR MISSION



At Dua Al Khaleej Contracting Co., our mission is clear: to provide top-notch steel fabrication, installation, and maintenance services while prioritizing innovation, reliability, and client satisfaction. We aim to set high industry standards in Saudi Arabia and beyond.



Our commitment to excellence drives us to constantly refine our methods, ensuring efficient, sustainable, and cutting-edge solutions. At Dua Al Khaleej Contracting Co., we strive not only to meet but surpass expectations, becoming the industry leader in exceptional contracting services.







# OUR VISION

At Dua Al Khaleej Contracting Co., our vision is to become a trailblazer in the contracting industry. We strive to set unprecedented standards in steel fabrication, installation, and maintenance services, both in Saudi Arabia and worldwide. Our vision includes an unwavering commitment to innovation, excellence, and sustainability. By prioritizing client satisfaction, embracing technological advancements, and adapting to industry changes, we aim to solidify our position as the preferred provider of exceptional contracting solutions, fostering growth and making a positive difference in the communities we serve.



# OUR GOALS

## EXCELLENCE IN SERVICE

Achieve and maintain a reputation for delivering superior quality in steel fabrication, installation, and maintenance, setting the industry standard for excellence.

## INNOVATION AND ADAPTABILITY

Embrace technological advancements and industry innovations to continually improve our services, staying at the forefront of cutting-edge solutions.

## CLIENT SATISFACTION

We are committed to giving back to the communities we serve. Our goal is to actively engage in community projects and initiatives that make a positive impact on society.

## SUSTAINABLE PRACTICES

Implement environmentally responsible practices in all aspects of our operations, aiming for sustainable growth while minimizing our ecological footprint.



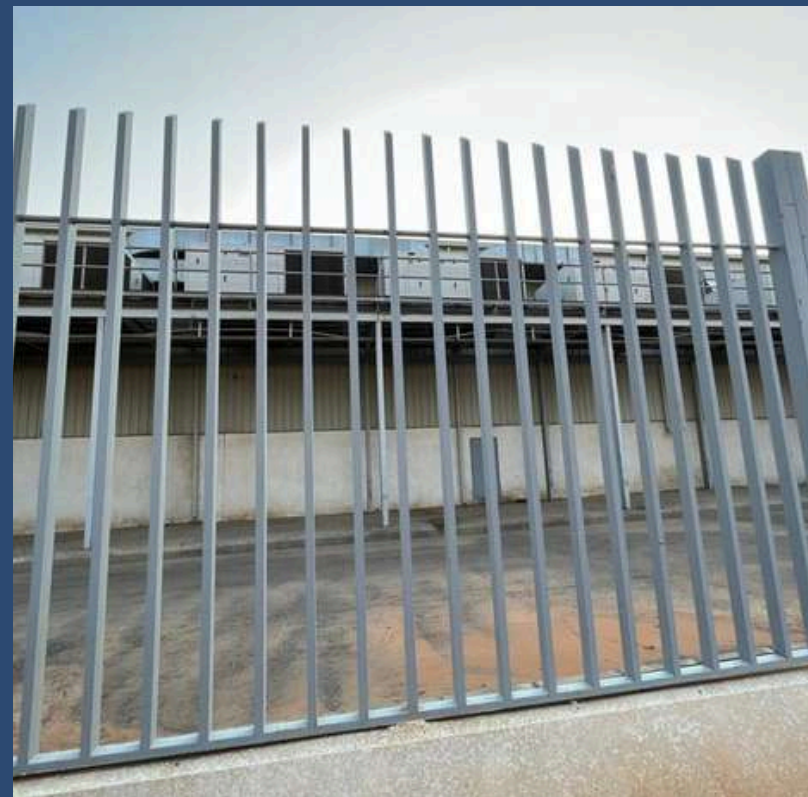


# OUR SERVICES

- Galvanized steel products
- Steel trolleys, stands, cabinets



- Composite panels
- Steel, wooden fences



- Foundation work
- Emergency steel doors, push bar locks



- AC unit frames, fixed I-Beams
- Steel, wooden doors







# OUR SERVICES

- Elevator maintenance
- Stainless steel channel framesStainless steel supply, installation



- Comprehensive maintenance team
- Chiller stands for frozen rooms
- Wood planks (18mm) supply, installation



- Football stands
- Wooden décor installationsDiverse fabrication installations







# OUR EXPERTISE

01

Proficiency in crafting a wide range of galvanized steel products, including trolleys, stands, cabinets, composite panels, and robust steel and wooden fences with precise foundation work.

02

Installation expertise in emergency steel doors, durable AC unit frames, various doors, and elevator maintenance, including proficiency in installing stainless steel channel frames.

03

Profound maintenance proficiency in diverse steel needs, crafting specialized products like chiller stands, football stands, unique wooden décor installations. Also, experience in supplying stainless steel components, 18mm wood planks, and various fabrications, showcasing versatile capabilities.



***"Crafting  
Excellence,  
Building  
Futures."***





# STEEL FABRICATION SOLUTIONS

At Dua Al Khaleej Contracting Co., our expertise in steel fabrication extends across a comprehensive array of products. We specialize in crafting galvanized steel items, including trolleys, stands, and cabinets. Our fabrication prowess also encompasses the creation of composite panels that offer durability and functionality. We take pride in constructing sturdy steel and wooden fences, reinforced with precise foundation work, ensuring reliability and longevity.





# PRECISION INSTALLATION SERVICES

Our commitment to excellence extends to our installation services. We excel in installing emergency steel doors equipped with push bar locks, ensuring safety and security. Additionally, our proficiency in installing heavy-duty AC unit frames, anchored with fixed I-Beams, guarantees durability and stability. Moreover, our expertise in installing a diverse range of steel and wooden doors caters to varied client needs. Elevator maintenance is another aspect where our specialized installation skills shine, ensuring smooth operation and safety protocols.







# MAINTENANCE EXCELLENCE



At Dua Al Khaleej Contracting Co., we offer comprehensive maintenance solutions tailored to diverse steel-related needs. Our adept maintenance teams specialize in handling various steel maintenance requirements, ensuring operational efficiency and longevity of the installed structures. We are committed to providing timely and effective maintenance services, ensuring optimal functionality and safety.





# SPECIALIZED PRODUCT OFFERINGS

Beyond standard services, we specialize in crafting specialized products tailored to unique requirements. Our expertise extends to creating chiller stands designed for frozen rooms in markets, ensuring optimal storage conditions. Additionally, our proficiency in designing football stands reflects our capability to cater to diverse needs. We also excel in creating distinctive wooden décor installations, adding aesthetic value to spaces.





# STAINLESS STEEL EXCELLENCE

Dedicated to stainless steel supply and installation, Soor Al-teen Contracting Co. delivers top-notch stainless steel components. We specialize in supplying and installing stainless steel channel frames, ensuring structural strength and durability. Our expertise in handling stainless steel ensures that clients receive high-quality, corrosion-resistant solutions for various applications.

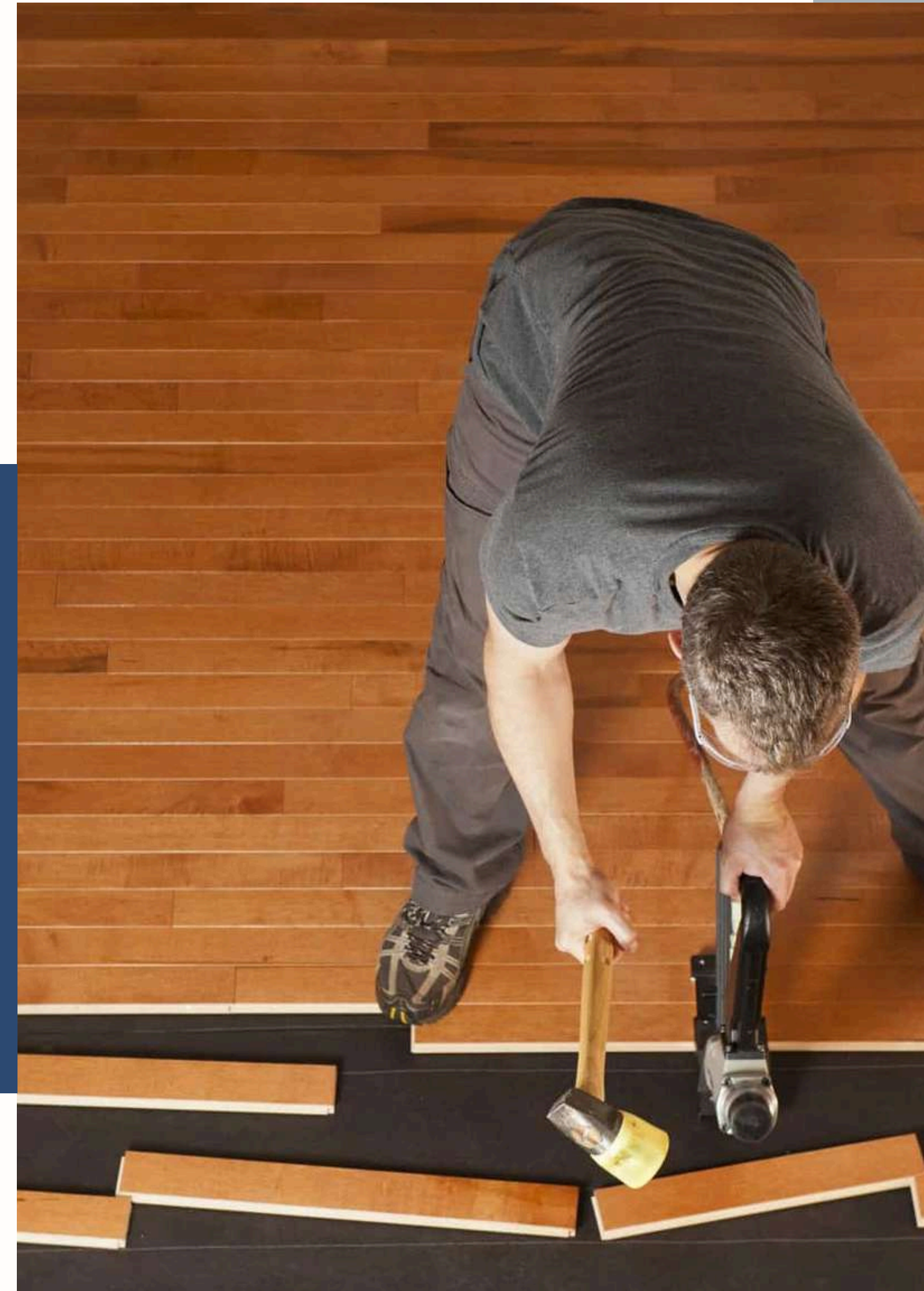




# WOOD PLANKS EXPERTISE



In addition to steel, we specialize in the supply and installation of 18mm wood planks. Our proficiency in handling wood materials ensures that clients receive durable and aesthetically pleasing installations. We prioritize quality and precision, delivering wood plank solutions tailored to diverse needs.





# INNOVATIVE COMPOSITE PANELS

At Dua Al Khaleej Contracting Co., our innovative expertise lies in crafting durable composite panels. These panels, a fusion of cutting-edge technology and meticulous craftsmanship, offer adaptable solutions across various applications. Engineered to meet rigorous quality standards, our panels assure structural integrity and resilience in diverse environmental conditions. Whether enhancing architectural designs or fulfilling industrial needs, our customizable panels prioritize both functionality and aesthetics. With an unwavering commitment to innovation and stringent quality, we redefine industry benchmarks, delivering composite panel solutions tailored to multifaceted construction and design requisites.







# ELEVATOR MAINTENANCE EXCELLENCE

At Dua Al Khaleej Contracting Co., we specialize in elevator maintenance, ensuring smooth operations and adherence to safety standards. Our maintenance teams possess the expertise to handle intricate elevator systems, conducting routine checks and necessary repairs promptly. We prioritize elevator safety, reliability, and optimal functionality to ensure seamless vertical transportation.



# CHILLER STAND SPECIALIZATION

Our specialization extends to the creation of chiller stands tailored for frozen rooms in markets. These stands are meticulously designed to provide sturdy and reliable support for chilling units, maintaining optimal temperatures for perishable goods. We ensure that our chiller stands adhere to industry standards, guaranteeing efficiency and reliability in market settings.







# FOOTBALL STAND CRAFTSMANSHIP



Dua Al Khaleej Contracting Co. takes pride in its expertise in designing and constructing football stands.

Our stands are engineered for durability, safety, and comfort, providing spectators with an enjoyable viewing experience. With a focus on structural integrity and aesthetics, our football stands are tailored to meet specific stadium requirements.





---

# UNIQUE WOODEN DÉCOR INSTALLATIONS

In addition to steel and specialized products, we specialize in creating unique wooden décor installations. Our team excels in crafting bespoke wooden décor elements, enhancing spaces with elegance and functionality. From customized wooden fixtures to intricate design elements, we cater to diverse aesthetic preferences, delivering personalized solutions to elevate interiors.





# GLASS PARTITION ELEGANCE

At Dua Al Khaleej Contracting Co., our expertise lies in crafting sleek and functional glass partitions. These partitions, tailored for both residential and commercial spaces, seamlessly combine sophistication with practicality. Whether enhancing office layouts for increased privacy or elevating interior design with modern partitions, our team meticulously designs and installs glass partitions to meet specific spatial needs. Emphasizing quality materials and precise installation, our partitions offer transparency, elegance, and architectural finesse, redefining spaces while preserving openness and functionality.

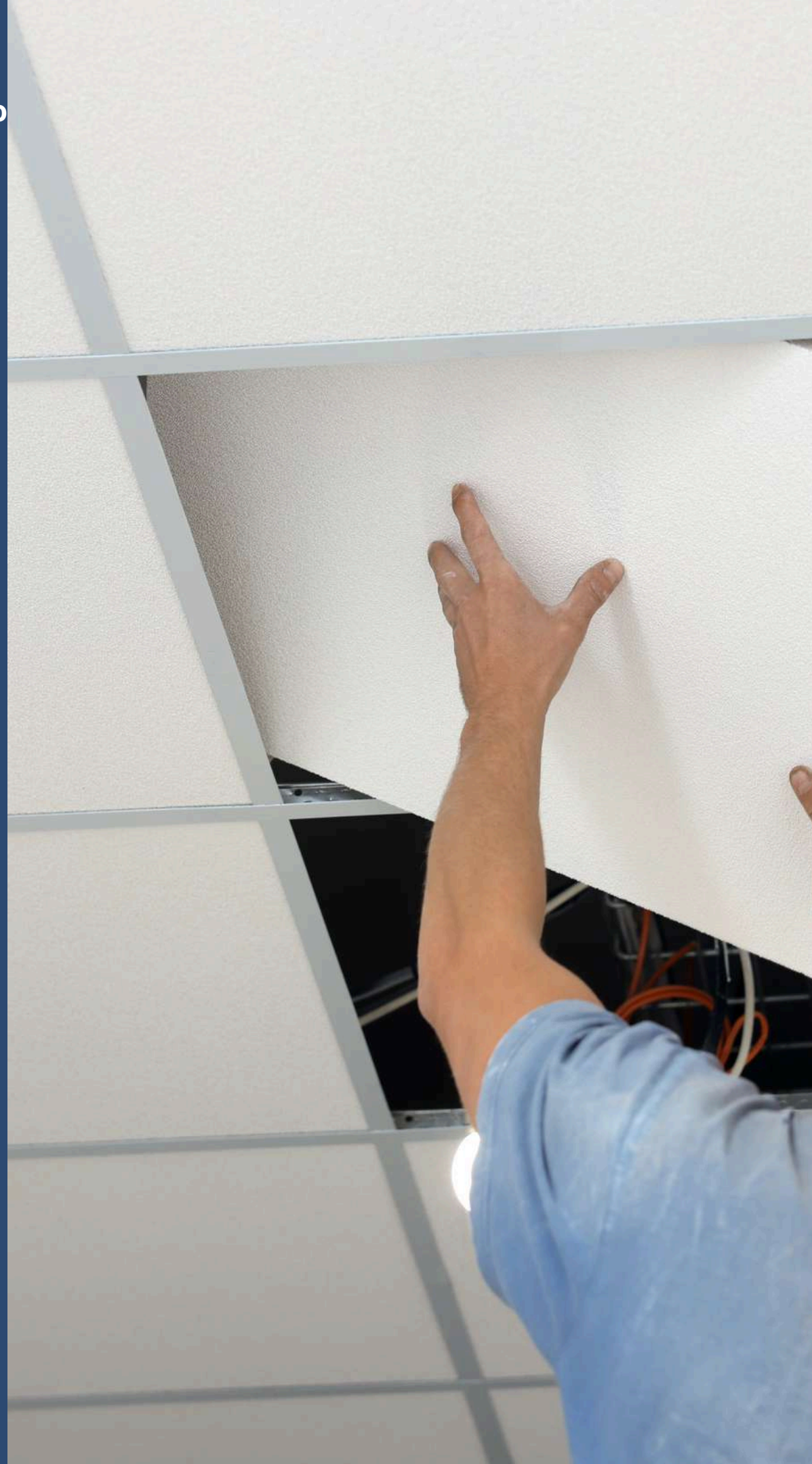


# OUR DEDICATED WORKFORCE

At Dua Al Khaleej Contracting Co., our greatest asset is our dedicated workforce whose strength lies in their unwavering commitment and expertise. Our team comprises skilled professionals who embody diligence, expertise, and a passion for delivering exceptional results. From seasoned craftsmen in steel fabrication to meticulous installers and maintenance experts, each employee contributes their specialized skills and dedication to ensuring the highest standards of quality and service. With a focus on continuous improvement, teamwork, and adaptability, our workforce forms the cornerstone of our success, embodying a collective commitment to excellence in every project undertaken.







## CEILING TILES

Our ceiling tiles are designed to enhance the aesthetic appeal and functionality of interior spaces. Manufactured with high-quality materials, they offer excellent durability, acoustic insulation, and fire resistance, making them ideal for both residential and commercial settings. Available in a variety of designs, colors, and textures, our ceiling tiles cater to diverse architectural styles and preferences. Whether you're looking to add a modern touch to an office or create a warm and inviting ambiance in a home, our ceiling tiles are the perfect choice for elevating any space.





# FLOORING TILES

We provide an extensive range of flooring tiles that combine style, durability, and practicality. Crafted from premium materials, our tiles are designed to withstand heavy foot traffic, resist wear and tear, and maintain their aesthetic appeal over time. From elegant ceramic and porcelain tiles to versatile vinyl and stone options, we offer solutions that cater to both functional and decorative needs. Our flooring tiles are available in various sizes, colors, and patterns, allowing clients to create unique and visually stunning flooring designs that complement their interiors.







## COPING AND FLASHING SOLUTIONS

Our coping and flashing solutions are engineered to provide superior protection against water infiltration while adding a polished finish to your structures. Coping protects the tops of walls and parapets, while flashing prevents water penetration at joints and roof edges. Manufactured using high-quality materials like aluminum, stainless steel, and galvanized steel, our products ensure long-lasting durability and weather resistance.



# FRP (FIBER REINFORCED PLASTIC) SOLUTIONS

At Dua Al Khaleej Contracting Co., we specialize in providing advanced FRP (Fiber Reinforced Plastic) solutions tailored to meet a wide range of industrial, commercial, and residential needs. FRP is a lightweight, durable, and corrosion-resistant material ideal for various applications, including structural components, piping systems, storage tanks, and decorative installations. Our FRP products are engineered with precision and fabricated using high-quality materials to ensure superior strength and longevity.





# GRP COATING SERVICES

Our GRP (Glass Reinforced Plastic) coating services are designed to protect and enhance the durability of structures and surfaces. GRP coatings provide excellent resistance to corrosion, chemicals, and environmental wear, making them ideal for industrial, marine, and architectural applications. We use advanced techniques and high-quality materials to apply GRP coatings with precision, ensuring a smooth, durable, and aesthetically pleasing finish. Whether it's for water tanks, pipelines, or structural components, our GRP coating solutions ensure optimal protection and longevity for your assets.



Dua Al Khaleej Contracting Co.

# OUR PROJECTS





# OUR PROJECTS



Tamimi Project 2023 (jeddah Sultan road )  
(Sasel Saudi L.L.C)  
Completed  
ACP-SANDWICH



Tamimi Project DQ (Sasel Saudi  
L.L.C) Embassy of saudi arabia 2021  
Completed



Tamimi Markets project 2021  
(Traved ) (Al-Majmah)  
Completed



# OUR PROJECTS



**Tamimi Markets Project  
2016(Buraidah) S-192 C  
Completed**



**Tamimi Markets Project 2017  
(Unaizah) S-190  
Completed**



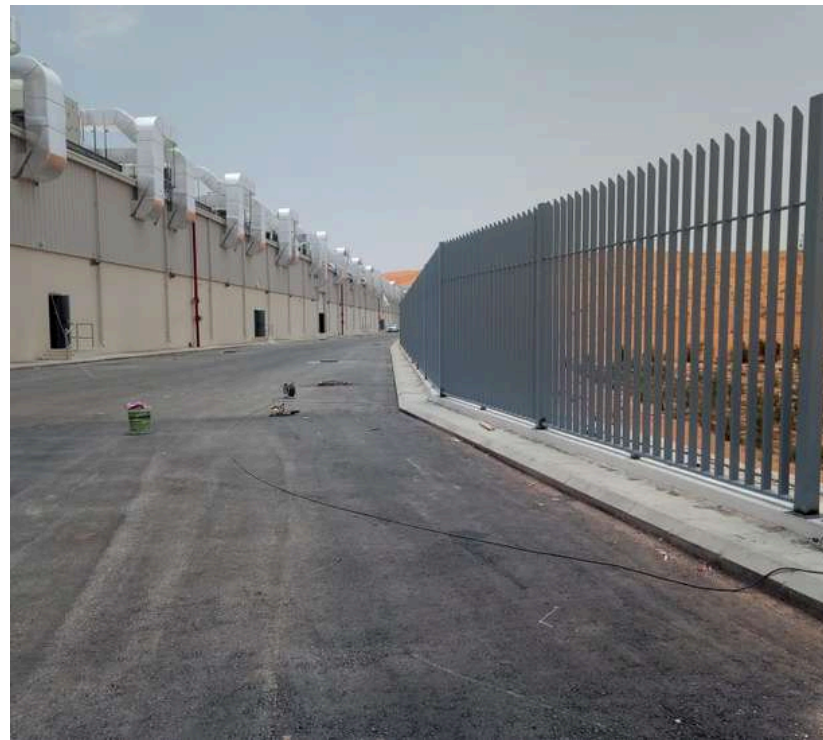
**Tamimi Markets Project 2019  
(Olaya)  
Completed**



# OUR PROJECTS



**Steel Fence Project (Vivi water  
-2019) 20,000sqm  
Completed**



**Steel Fence Project (Vivi water  
-2019) 20,000sqm  
Completed**



**Steel Fence Project (Vivi water  
-2019) 20,000sqm  
Completed**



# OUR PROJECTS



**Steel Fence MDF Project 2015  
(Extra -Riyadh )  
Completed**



**Steel Fence MDF Project 2015  
(Extra -Riyadh )  
Completed**



**Steel Fence MDF Project 2015  
(Extra -Riyadh )  
Completed**



# OUR PROJECTS



**AC BASE UNIT FRAMES (2014-2024) -  
(Deemah Biscuits ) (AL DOUR )  
(Riyadh, Al-Karaj , Khobar , Jeddah ,  
Tabuk , Abha , Dammam, Qasim ,  
Madinah , Makkah , Hafra Batin )  
More than 500+ AC UNITS FRAME  
Completed**



**AC BASE UNIT FRAMES (2014-2024) -  
(Deemah Biscuits ) (AL DOUR )  
(Riyadh, Al-Karaj , Khobar , Jeddah ,  
Tabuk , Abha , Dammam, Qasim ,  
Madinah , Makkah , Hafra Batin )  
More than 500+ AC UNITS FRAME  
Completed**



**AC BASE UNIT FRAMES (2014-2024) -  
(Deemah Biscuits ) (AL DOUR )  
(Riyadh, Al-Karaj , Khobar , Jeddah ,  
Tabuk , Abha , Dammam, Qasim ,  
Madinah , Makkah , Hafra Batin )  
More than 500+ AC UNITS FRAME  
Completed**



# OUR PROJECTS



AC BASE UNIT FRAMES (2014-2024) - (Deemah Biscuits ) (AL DOUR ) (Riyadh, Al-Karaj , Khobar , Jeddah , Tabuk , Abha , Dammam, Qasim , Madinah , Makkah , Hafra Batin )  
More than 500+ AC UNITS FRAME Completed



AC BASE UNIT FRAMES (2014-2024) - (Deemah Biscuits ) (AL DOUR ) (Riyadh, Al-Karaj , Khobar , Jeddah , Tabuk , Abha , Dammam, Qasim , Madinah , Makkah , Hafra Batin )  
More than 500+ AC UNITS FRAME Completed



# OUR PROJECTS



**Steel Fence Project ( Sudeyr -  
Warehouse -2019) 40,000sqm  
Completed**



**Steel Fence Project ( Sudeyr -  
Warehouse -2019) 40,000sqm  
Completed**



# OUR PROJECTS



City Soultions Company -  
project Neom staircase (2021)  
Completed



City Soultions Company -  
project Neom staircase (2021)  
Completed



# OUR PROJECTS



aljazera Hyper Project 2023 (Sulamiyah - Riyadh )  
Completed



# OUR PROJECTS



aljazeera Project - 2023-2024 (Thakhassusi )  
Completed





# CLIENTS WE SERVED







# WHY CHOOSE US?

**01** Our unwavering dedication to exceptional craftsmanship resonates through every service we provide. From steel fabrication to specialized installations and maintenance, our commitment to excellence ensures reliable and durable outcomes, earning us our clients' trust.

Embracing cutting-edge technology, we tailor our services to evolving industry trends. This flexibility enables us to offer adaptable and dependable solutions, efficiently catering to diverse needs.

Placing client satisfaction at the forefront, we prioritize understanding individual needs. Our collaborative approach ensures personalized solutions, fostering lasting relationships built on trust and reliability.







# OUR CONTACT



## ZUBAIR ASHRAF IQBAL



0580992017



zubairsooralteen@gmail.com



3213 Tareeb Street, Industrial Area 8,  
12871 Riyadh, Kingdom of Saudi  
Arabia







Dua Al Khaleej Contracting Co.

# THANK YOU







**"BUILDING DREAMS, FORGING STEEL -  
Dua Al Khaleej Contracting Co."**